



CHAN MR GROUP

2024
COMPANY
PROFILE



ENGLISH VERSION



ที่ 12001220003683

สำนักงานคณะกรรมการส่งเสริมการค้า
กรมส่งเสริมการค้าระหว่างประเทศ

หนังสือรับรอง

ขอรับรองว่าบริษัท ชันเอร์ กรุ๊ป จำกัด (มหาชน) ซึ่งเป็นบริษัทจดทะเบียนในตลาดหลักทรัพย์แห่งประเทศไทย
เมื่อวันที่ 20 เมษายน 2554 ได้ยื่นขอขึ้นทะเบียนและได้รับเลขที่ 0125554007553
ภายใต้การกำกับดูแลของกรมส่งเสริมการค้าระหว่างประเทศ ณ วันที่ 20 เมษายน 2554

1. ชื่อสินค้า ชันเอร์ กรุ๊ป จำกัด
2. ประเภทของสินค้า 2.01 ฐานภาษีสินค้าส่งออก

1. เลขที่วีซ่า 0000000000
2. เลขที่วีซ่า 0000000000

3. จำนวนเงินโดยประมาณที่คาดว่าจะได้รับสุทธิ (บาท) 0000000000

4. มูลค่าของเงิน 100,000,000.00 บาท / หักด้วยเงินภาษีมูลค่าเพิ่ม

5. จำนวนเงินที่ส่งคืนวันที่ 11/9/2554 หรือวันที่ 11/9/2554 หรือวันที่ 11/9/2554

วันที่ออกวีซ่า 11/09/2022

เลขที่หนังสือ 42/00 ส่งตามบัญชีรายชื่อผู้ประกอบการที่ได้รับอนุญาต จำนวน 4 แห่ง โดยมีรายละเอียด
รายชื่อผู้ประกอบการที่ได้รับอนุญาตดังนี้

ออกโดย ณ วันที่ 05 เดือน กรกฎาคม พ.ศ. 2563

[Signature]
นายสมชาย งามเลิศ
อธิบดีกรม

ที่ประทับ: กรุงเทพมหานคร
เลขที่: 1000000000

19

Mr. Raveerat Thammaratthasri
Managing Director
CHAN MR GROUP CO., LTD.
1192 Moo 1 Bangkruai-Sainoi Rd., Bangrukpattana Bangbuahtong, Nonthaburi 11110

Certificate of PRSS Construction Completion

Dear Sir,

With reference to completion inspection, the works of construction has substantially executed and completed.

We hope you to promote the installation of PRSS (Plastic Rainwater Storage Structure) and enhance the capability of the construction method of PRSS through the future construction.

Project name of JICA/Japan International Cooperation Agency
SDG's Business Verification Survey with the Private Sector for
Plastic Rainwater Storage Structure to Prevent Inundation Damage in Thailand
Construction Item
From October 18 To December 27, 2019.

[Signature]
Mr. Yoshida, Hiroko
President of CHCHEBU CHEMICAL Co., Ltd.
株式会社チカル株式会社

TRANSPACIFIC CERTIFICATIONS LIMITED

TCL

Certificate of Registration

This is to certify that
Quality Management System
of
CHAN MR GROUP CO., LTD.
Site 1: 119/2 Moo 1 Bangkruai-Sainoi, Bangrukpattana, Bangbuahtong, Nonthaburi 11110, Thailand.
Site 2: 60/2 Moo 8 Borwin, Sriracha, Chonburi 20230, Thailand.

complies with the requirements of
ISO 9001:2015
This certificate is valid concerning all activities related to:

**Construction and Engineering Service,
Design and Manufacture of Steel Products.**
ANZSIC Code: 2229, 2231, 3020, 6923

17509 Certificate No. Apr. 07, 2023 Date of this Certificate Apr. 06, 2024 *Next Audit Due Date

Apr. 07, 2023 Date of Initial Registration Apr. 06, 2026 Certification Expiry Date *[Signature]* Managing Director/Director

TRANSPACIFIC CERTIFICATIONS LIMITED

Website: www.transpacific.com Email: info@transpacific.com
Accreditation by International Federation of Standards Development (IFSD) and New Zealand Accreditation (NZAS 20420201)
1 Praga Court, DEANCLIFF 2012, AUSTRALIA
Info@transpacific.com.au
This certificate is only valid if it is issued under the ISO 9001:2015 standard.
The certificate of registration remains the property of Transpacific Certifications Limited and will be returned immediately upon request.
*To use the mark for promotional purposes, it is not allowed to be used in a way that is not in accordance with the conditions of the certificate and the terms and conditions.
Version 1.02

TRANSPACIFIC CERTIFICATIONS LIMITED

TCL

Certificate of Registration

This is to certify that
**Occupational Health and
Safety Management System**
of
CHAN MR GROUP CO., LTD.
Site1: 119/2 Moo 1 Bangkruai-Sainoi, Bangrukpattana, Bangbuahtong, Nonthaburi 11110, Thailand.
Site2: 60/2 Moo 8 Borwin, Sriracha, Chonburi 20230, Thailand.

complies with the requirements of
ISO 45001:2018
This certificate is valid concerning all activities related to:

**Construction and Engineering Service,
Design and Manufacture of Steel Products.**
ANZSIC Code: 2229, 2231, 3020, 6923

O-2834 Certificate No. Apr. 07, 2023 Date of this Certificate Apr. 06, 2024 *Next Audit Due Date

Apr. 07, 2023 Date of Initial Registration Apr. 06, 2026 Certification Expiry Date *[Signature]* Managing Director/Director

TRANSPACIFIC CERTIFICATIONS LIMITED

Website: www.transpacific.com Email: info@transpacific.com
Accreditation by International Federation of Standards Development (IFSD) and New Zealand Accreditation (NZAS 20420201)
1 Praga Court, DEANCLIFF 2012, AUSTRALIA
Info@transpacific.com.au
This certificate is only valid if it is issued under the ISO 45001:2018 standard.
The certificate of registration remains the property of Transpacific Certifications Limited and will be returned immediately upon request.
*To use the mark for promotional purposes, it is not allowed to be used in a way that is not in accordance with the conditions of the certificate and the terms and conditions.
Version 1.02

MISSION



- ✓ Open communication we encourage open discussion and the best ideas win.
- ✓ Customer focused we put our customers at the center of our focus and our promise to our customers is to provide world class service level and products.
- ✓ Team work we proactively share information, knowledge and ideas, enthusiastically working towards our shared goals and excel together as one team.
- ✓ Diversity and respect the diversity in our teams is an asset and we treat everyone with dignity and respect regardless of status, gender, education, ethnicity and religion.
- ✓ Employees are our assets we believe our greatest asset is our employees and we invest to bring out their potential through continuous training, coaching and mentoring, and also career development planning.
- ✓ Empowerment we empower our people to make decisions within delegated authorities.
- ✓ Meritocracy the rewards and career advancement of our people are based on their performance and capabilities.

QUALITY POLICY

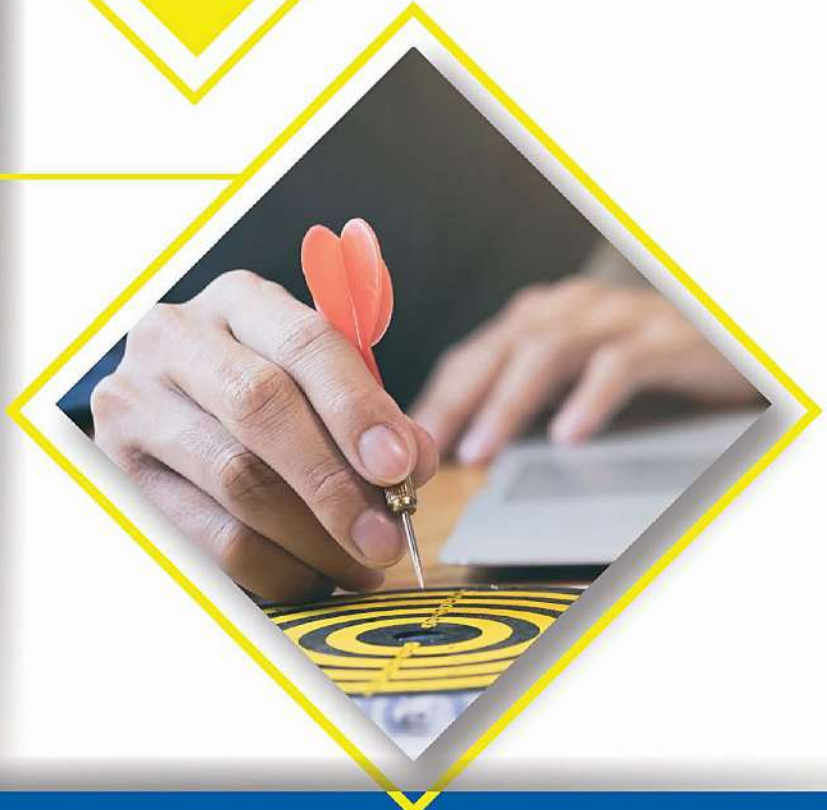
**" Committed to developing construction and products
With continuous human resource development
To maximize efficiency and effectiveness "**

VISION

" Chan Mr Group

We focus on building trust partners at all levels with quality work, deliver on time and after sales service.

Looking beyond to the future with modern technology, Awareness of the environment and working safely, **"**





GARNER PROJECT
TOTAL AREA 72,472 SQM.

CHAN MR GROUP

Has continuously grow as an organization by expanding the production base and investment in various business opportunity including importing and production of innovative technology to meet the needs of our customers professionally. This has resulted in an efficient customer services and high standard of work and safety which is one of main philosophies of our organization. This philosophy of ours has made Chan MR Group widely recognize by both our domestic and foreign customers for our services.



“ We aim to further increase the quality of our services with honesty and sincerity, hoping to be a part in the success of our customers.”



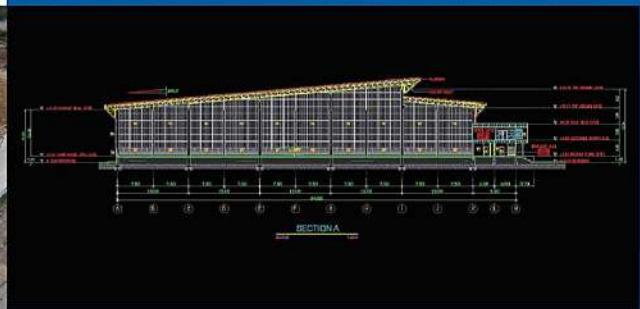
We specialize in the design and construction of factories with 30 years of experience in the field, offering rentals of machinery and construction equipment, along with transportation trucks and services in the construction of houses, fences, garages, gas station, underground water tanks and many more.



CHAN MR GROUP

We focus on building trust partners at all levels with quality work, deliver on time and after-sales service. Looking beyond to the future with modern technology, Awareness of the environment and working safely.





CHAN MR CONSTRUCTION

Service turnkey One Stop Service.
The one-stop service Both designs
And construction The quality standards,
such as building warehouses. office building
And utilities team Engineers and architects
with experience.

DESIGN

“Modernly design according
to the needs of our
customers”

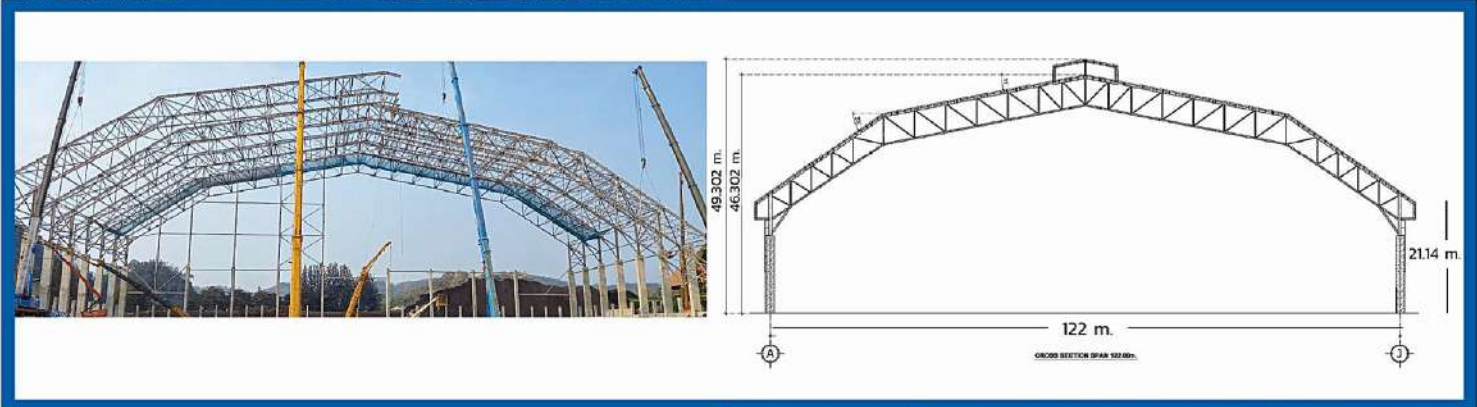
“Designs by team of skilled architects
to satisfy all types of needs.”



PEB

"Quick construction of Steel framed buildings."

Pre Engineered Buildings are structural buildings with pre-assembled parts from factories, delivered to the site of construction before being set up with a bolt system, increasing indoor spaces and significantly reducing the time needed to complete the construction.



TRUSS

"Robust and stylish design by a team of expertise to satisfy the needs of our customers"

Manufactured with high standard materials and designed by experienced technicians, our truss are durable and can provide support to a wide range of sizes of roofs.





"International Standards Construction with Professional"

Construction of factories, warehouses and offices with the latest technology to ensure the highest quality.



TAAP VDO

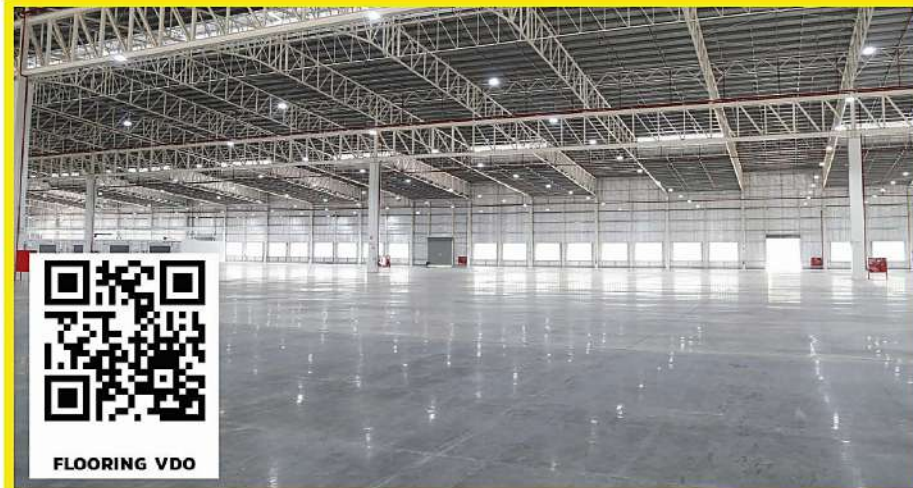
thonburi automotive assembly plant co. ltd



Prospect Phase 5 SUEZ F



Exotic



FLOORING VDO

FLOORING

"Strong, smooth, with International standards"

Strong concrete slabs able to withstand the weight of large trucks equipped with drainage system made to international standards.

PRE-CAST

"Installation of pre-made anchor piles and beams made to modern engineering standard"

Done with a construction technology that involves precast concrete, which can be prepared readily within a short period of time, managed by experts.



PROJECT ON HAND



LOGISTICS PARK CHONBURI



PITI COLD STORAGE AYUTTHAYA



KATOEN NATIE MDC 20B RAYONG



H2 NEW FACTORY PHASE 2 CHACHOENGSAO



Alpha LCB A CHONBURI



TTFT Warehouse SW-21,SW-22 RAYONG



SIAM PRECISION PRODUCTS CO., LTD. บริษัท สยามประติคมผลิตภัณฑ์ จำกัด





ENGINEERING
VDO

CMR | ENGINEERING



CHAN MR ENGINEERING

We are a specialist in steel transform, meeting customer requirement professionally.



BENDING

"Can be made accordingly to our customers needs"

Offers bending and molding services to our customers performed by modern technology and supervised by a team with over 30 years of experience.

CNC PLATE SHEARING AND PRESSING

**CNC PLATE
SHEARING
AND PRESSING**

**Cutting Machine
Controlled by the system
computer**

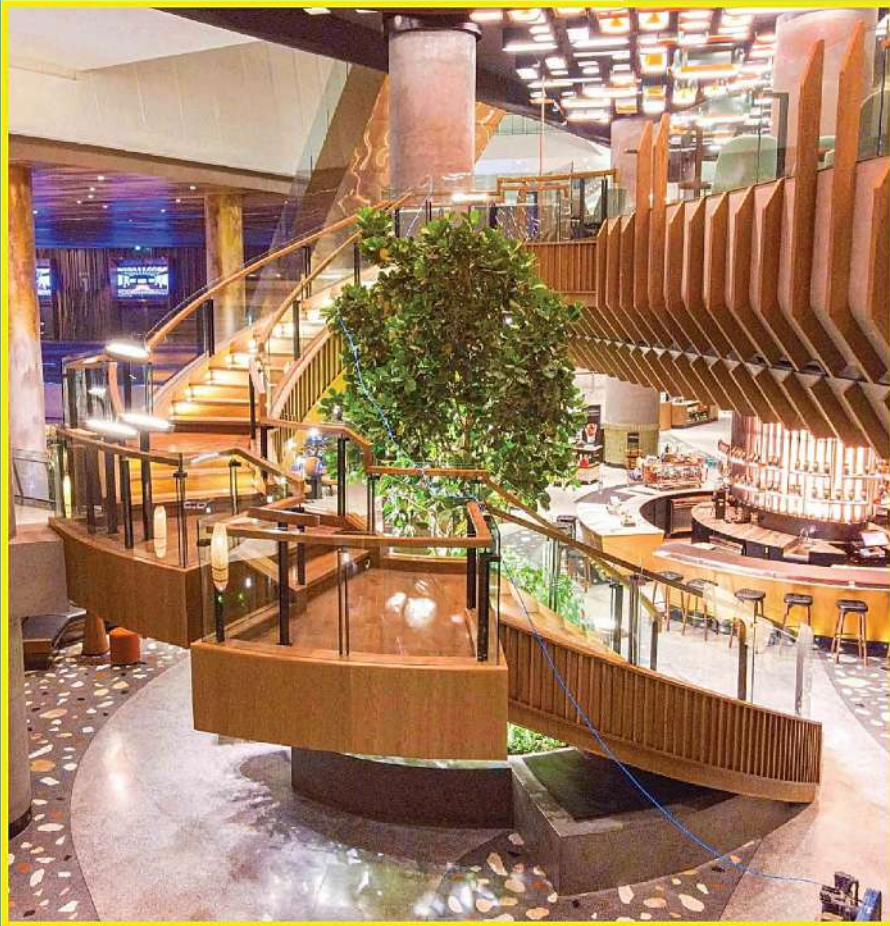


MACHINING

**"Bolt production
ranging from 9 mm.
to 50 mm. in sizes"**

Provide lathing, drilling, milling,
twistion and cutting of steel
services for our customers.





STEEL STRUCTURE FABRICATION

"We design and construct steel structures of various types as per customer requirements including roof structure, structural steels, billboards and construction equipment."



STEEL CASING

We produce and sell reinforce bar and beams of various sizes manufactured using machine controlled computers with high accuracy, along with delivery of the bar to the site of construction.





CHAN MR RENTAL

Co.,Ltd is a subsidiary of Chan MR Group Co.,Ltd which offers rental of machinery, construction tools and transportation trucks along with maintenance services. Nowadays in construction sites, the role of construction tools have been more important than ever due to the high demand of quality from the customers. To meet this demand, the transportation and machinery department of Chan MR Group is well equipped with the latest model of machinery for use with its safety guaranteed and managed by well trained staff that priories safety working condition.



HEAVY MACHINE

Rental services of the latest model machinery with its quality and safety guaranteed.





รถขนส่ง

12 Wheel loader Crane of 15 Ton



Domestic transport services oversees by talented and punctual teams.

10 Wheel loader Crane of 8 Ton



10 Wheel loader Crane of 6 Ton



Tool Service

Rentals of construction tools and equipment as an alternative choice for customers to reduce costs for maintenance.

*For example, construction tools Rent

DCA 110ESI



BS 60-4s

เครื่องตัดหญ้า 14"



TE 30

สว่านไฟฟ้า 10แอมป์ 3/8 - 13/16"



MT 1100

เลื่อยไฟฟ้า Makita (750 w.)



S 2416

เครื่องตัดผิว 16" (1,430 w.)



MT - B4F

เครื่องเจาะเสา ปืนหนัก 85 KG.



SG 1250

เครื่องตัดหญ้า (1,430 w.)



GX- 160

เครื่องตัดหญ้า 32"



Maintenance

Chan MR Service
Repair service Used
construction machines
Car tool Construction
equipment



Engine repair



Repair of hydraulic systems.



Spraying



Repair of hydraulic systems.



Electrical Repairs



Construction equipment repair

WELDING GRANTY

SIASUN

CHAN MR TRADING

Import constructions machinery for factories and innovating products that covers various utilizations in the industry



Welding Robot

DAMA

Hypertherm®



HDC-2020



DAMA BEVEL +PIPE+TUBE



YHGK-3 PINCHING PIPE ROTATOR



HGK-10
ADJUSTABLE TURNING ROLLS
TECHNICAL SPECIFICATION



XPR300



T SERIES

Laser Tube & Pipe



S SERIES

Laser Cutting



E-T SERIES

Laser Plate & Pipe

เครื่องเชื่อมเต่า

PROMOTECH®



PRO 35 ADA



PRO 36 R

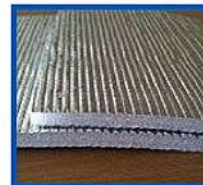


LIZARD WITH OSCILLATION



GECKO HS

TEMPA GUARD THERMAL INSULATION SOLUTION



- Aluminum Foil and Bubble Insulation
- Aluminum Foil Foam Insulation



- The superior foil that is specially designed to meet global standards. It meets your needs for an effective and cost efficient protection from the ravages of harsh weather conditions.
- has high reflective properties. Rigorous tests are constantly conducted to ensure its durability & reliability. It is proven for its effectiveness, making it the ideal choice for providing optimum insulations against radiant heat & moisture vapour. Light in weight yet strong and durable.
- is designed for easy handling and offers superior quality at the fraction of the overall building cost.

ECONOMIC QUALITY RELIABILITY

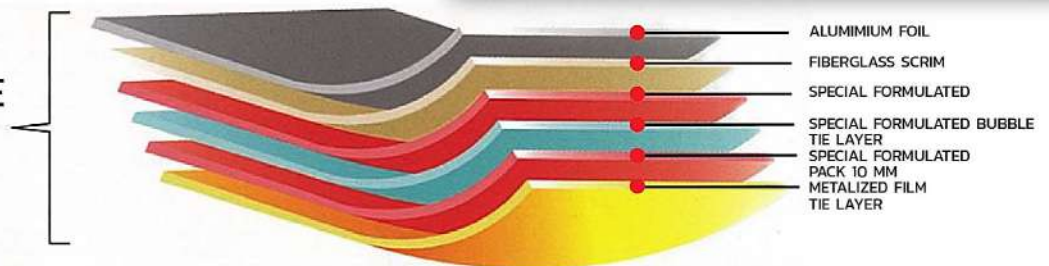
BUBBLE FOIL

CHARACTERISTIC	TEST METHOD	UNIT (S)	SPECIFICATION	CLASSIFICATION
Grammage	BS EN 965	g/m ²	280 ± 100	-
Tensile Strength	MD	AS/NZS 1301.448s	> 3.0	Heavy
	CD		> 3.0	
Edge Tear Resistance	TAPPI T470	N	> 50	
Vapour Barrier	ASTM E 96	MN.s/g	< 450 > 7	Medium
Emittance	ASTM C1371	Index	≤ 0.05	Single Sided Reflective
Thermal Resistance	ISO 8301/MS ISO 8302	m ² K/W	1.248	-



FIRE RETARDANT TEST FOR S402		
CHARACTERISTIC	TEST METHOD	SPECIFICATION
Fire Propagation of Material	BS 476 ; Part 6	<6
Sub-Index, i_1		<12
Overall Performance Index	BS 476 ; Part 7	Class 1
Surface Flame Spread Test		Class 0
Classification of Fire Hazard		

FR COMPLIANCE COMPOSITE STRUCTURE



6 layers FR compliance composite structure made up of double sided reflective material (Aluminium & Metalized) bonded to bubble pack by special material.

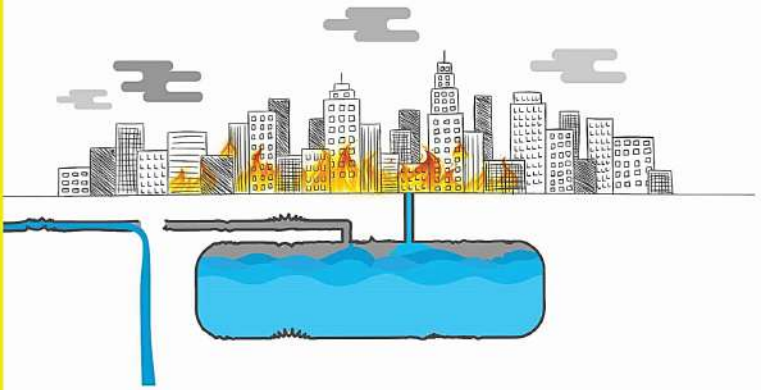
- 97% Radiant Heat Reflectivity**
 radiant barrier dramatically improves energy efficiency of a building by effectively reducing up to 97% of radiant heat.
- Moisture Barrier (WVTR)**
 is a good vapour barrier which is specially designed to prevent any penetration of water and moisture-laden air, guarding against condensation, rot and mildew.
- Lightweight**
 is lightweight and strong, thus it makes installation work much efficient.
- UV+ Heat Stability**
 has the ability to maintain its physical size and properties under extreme temperature changes.
- Tear & Puncture Resistance**
 is strong and has high tear resistant feature due to its superior reinforcement.
- Fire Retardant**
 fire rated series tested and complied with international standards such as BS 476 part 6 & 7 . ASTM E84 and AS 1530.
- No Wire Netting**
 being strong and durable is design without additional supporting material for installation.
- Energy Saving**
 radiant barrier is designed to provide good insulation to improve energy performance of the building and save energy.
- SIRIM Certification**
 fire rated series are tested and certified to Sirim Products Listing.

ถึงเก็บน้ำใต้ดิน แบบทนต่อการเกิดแผ่นดินไหว

AQUA TANKS

เก็บรักษาน้ำ เพราะน้ำคือชีวิต

Aqua tanks is a tank produced by Chan MR Group by selecting the best technology in water management to find a solution to the various problems about water storage. We expect our daily lives to go on smoothly without the need to worry about the things that have not yet happen. Therefore, no matter what, there will be water flowing with no shortage. Aqua tanks will be the solution to water storage problems and prevent many areas from ever having water shortage during time of need, ever again.



“Clean tap water used in houses is send through pipelines that may be damaged during natural disasters such as earthquakes, floods, drought and fire or stop supplying water during repairing of the pipelines

This is where water tanks for storage comes in as it can be an important factor in providing us with water for usage”



AQUA TANKS
รับประกันคุณภาพ

20 ปี



Highlights Of Aqua Tanks

- ✓ Made with corrosion resistant steel sheet which has gone through mastic epoxy process covering both the inner and outer tank structure, strengthenint the tank surfaces and preventing any leakage.
- ✓ Made with flexible steels making the tanks resistant to earthquake and cracks.
- ✓ Coated with liquid epoxy inside and mastic epoxy outside resulting in a rust resistant tank.
- ✓ Resistant to air pressure due to its cylinder shaped structure.
- ✓ Light weight for ease of transportation and set up.
- ✓ Can be used as a reserve for clean water in emergency cases with the help of a filter system set up within the tanks.

AQUA TANKS 3 Different Size of to meet the needs of various demands

Large Tank
100,000 liters

AQUA TANKS
ESE100

For



Can hold water for up to 11,000 people usage of water for 3 days. Suitable for places with high water usage such as hospitals, large building, factories, school and parks.

Medium Tank
40,000 liters

AQUA TANKS
ESE40

For



Can hold water for up to 4000 people usage of water for 3 days. Suitable for area with moderater water usage such as medium-sized hospitals, communities, schools and buildings.

Small Tank
5,000 liters

AQUA TANKS
ESE5

For



Suitable for area with moderate water usage such as medium-sized hospitals, communities, schools and buildings.

WORKER ACCOMMODATION



"Strong and durable prefabricated accommodation with an elegant design, made using high quality materials to match modern engineering standards."



FENCE 4 RENT.NET

คิดถึงรั้ว...คิดถึงเรา



www.fence4rent.net

METAL SHEET FENCE

Prefabricated fences set up on a variety of surfaces such as ground, concrete or cement, by professionals using international standard materials.



FENCE VIDEO



VDO C PARK

Garage : simple setup

-  Light Weight
-  Durable
-  Easy Installation
-  Low Budget
-  Modern
-  Flexibility





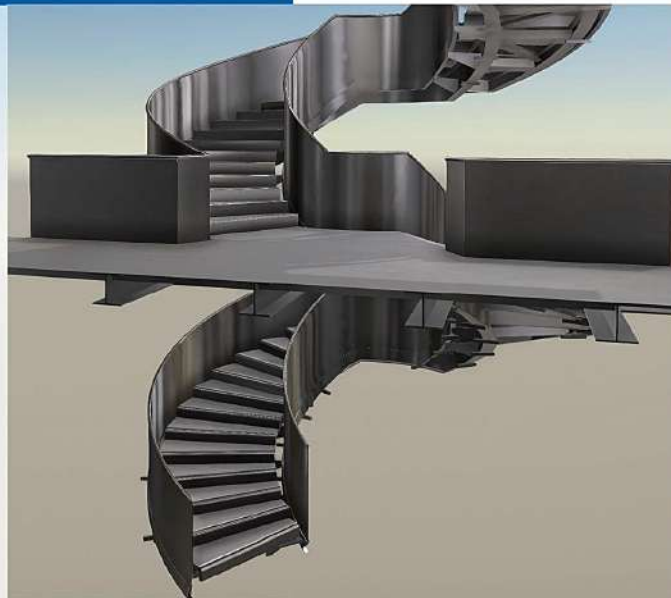
**CONSTRUCTION
DETAILING**

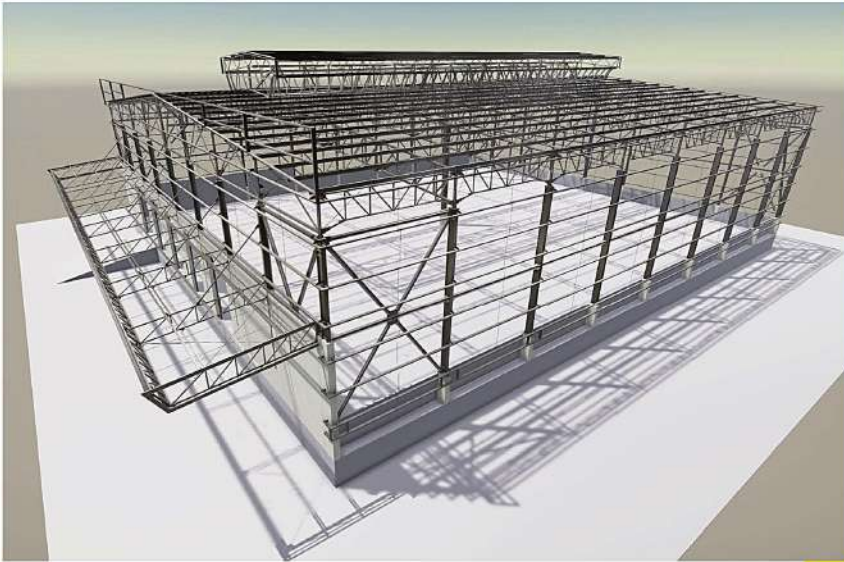
CHAN MR DETAILING

Offer advices regarding Detailing 3D Model, Shop Drawing, As Built Drawing, BOQ List and also provide advices in managing projects involving steel construction, concrete reinforce steel structures and other system using BIM technology.



SHOP DRAWING



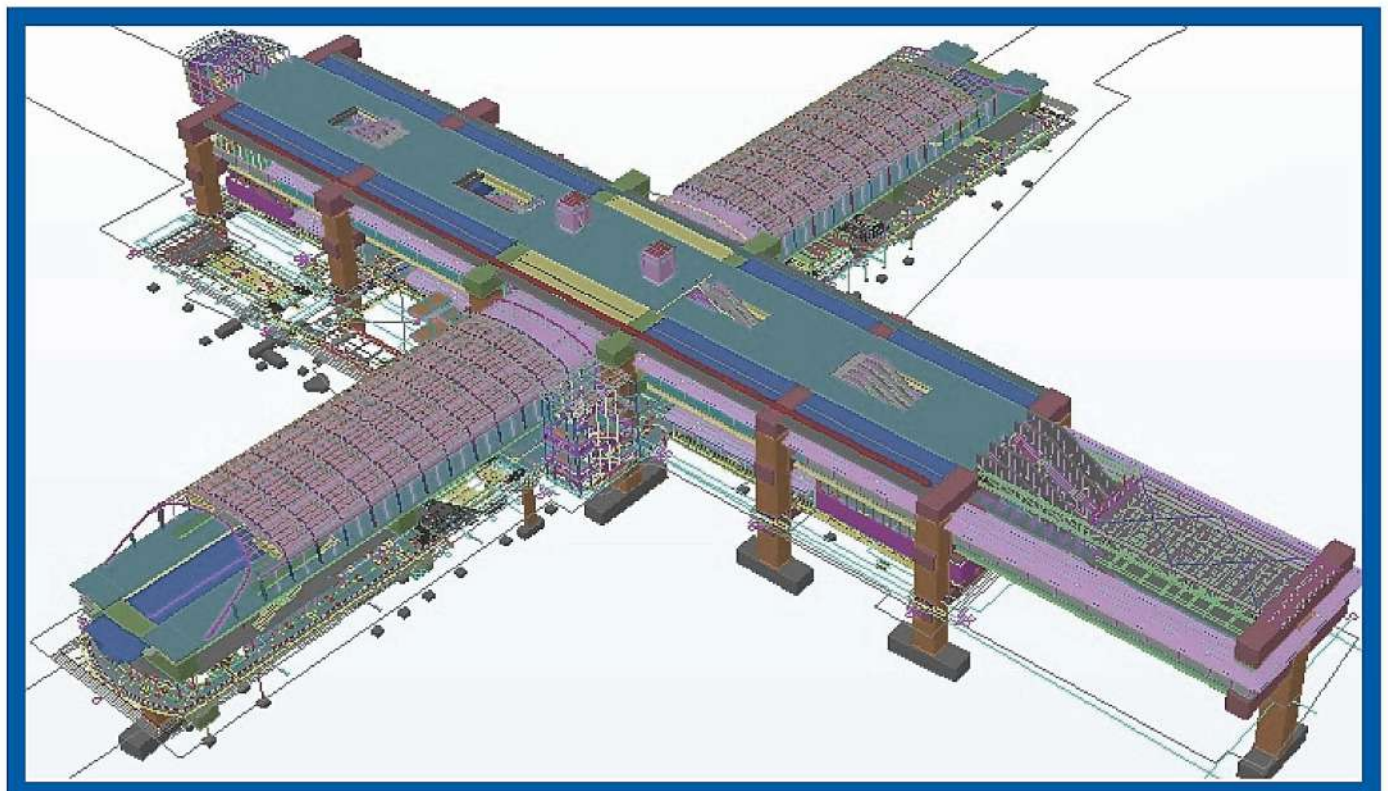
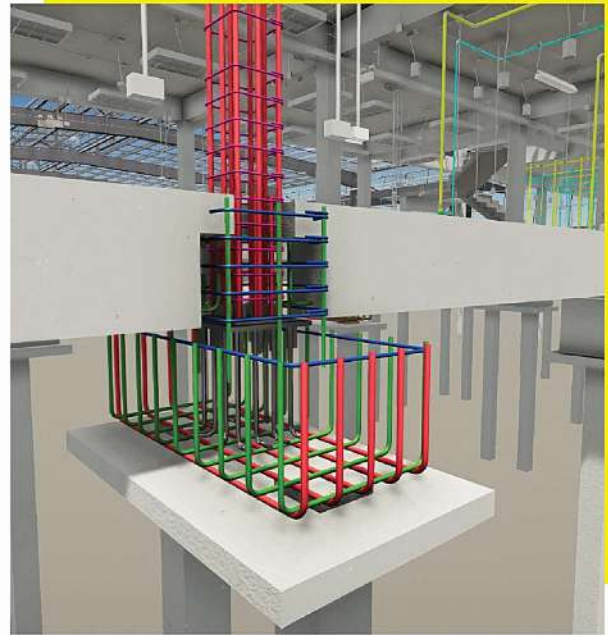


BIM for Construction

BIM for construction management system is a system which combines every aspect of the work together such as architecture, structure, design and other related works in order to make planning for the project easier and more efficient thus increasing profits.

Infrastructure Work Detailing

- Services for the design and planning of basic utilities such as construction of electric trains, double rail train and others
- Provide a Shop Drawing services and find the amount of work (BOQ), concrete work and reinforce steel Bar Bending Schedule
- Provide services in making BIM of all aspects including the architecture structure and system





Construction
080-970-4396
Jarat



Bending
090-090-7303
092-224-6889
Sarayoot, Preecha



Transport/Rental For rent
088-002-6707
086-977-6825
Boonpeng, Kiatisak



Steel Casing
085-918-0685
092-223-1356
Vimonpan, Saowanee



087-673-3456
090-090-7302
Kitkajorn, Narongrit



Maintenance
080-970-4253
Kritsana



Worker Prefab House
Fence
085-918-0639
Payow



Import Machinery Factory
081-857-3648
Philip Ang



Youtube



Facebook



www.chanmr.com

CHAN MR GROUP CO.,LTD.

119/2 Moo1 Bangkruai-Sainoi Rd., Bangrakpatana Bangbuathong Nonthaburi 11110

Tel. +662 034-7777 Fax. +662 032-3939 E-Mail:info@chanmr.com www.chanmr.com

